

WP-QF

Turbine Water Meter
for cold water up to 40 °C
for hot water up to 130 °C
PN25/40, DN 50 ... DN 300



Main characteristics

For cold water up to 40 °C

Sealed register water proof (IP 67)
Sealed register may be rotated through 360°
Up to 3 pulsers can be fitted without breaking the meter seal
Maximum corrosion protection by powder coating
Not affected by external magnetic fields
Interchangeable measuring element
Performance data better than class B

Application

Measuring of cold water up to 40 °C (overloadable up to 50 °C) in water supply pipelines with pressure up to 25/40 bar

Main characteristics

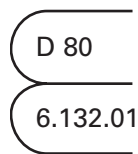
For hot water up to 130 °C

Sealed register water proof (IP 67)
Sealed register may be rotated through 360°
Up to 3 pulsers can be fitted without breaking the meter seal
Maximum corrosion protection by powder coating
Not affected by external magnetic fields
Interchangeable measuring element

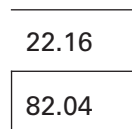
Application

Flow sensor for heat meters
Measuring of hot water up to 130 °C (overloadable up to 150 °C) in heating systems with pressure up to 25/40 bar

Pattern Approval Sign

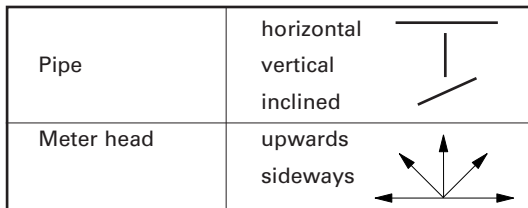


Cold Water Meter
 Nominal Diameter
 DN 200 ... 300
 Marking:
 Metrological class B
 30 °C



Flow Sensor
 Nominal Diameter
 DN 50 ... 200
 Marking:
 Metrological class B

Installation



Installation Requirements

- Unrestricted straight pipe in front of the meter 3 x DN
- No abrupt restrictions directly behind the meter

Performance Table 40 °C

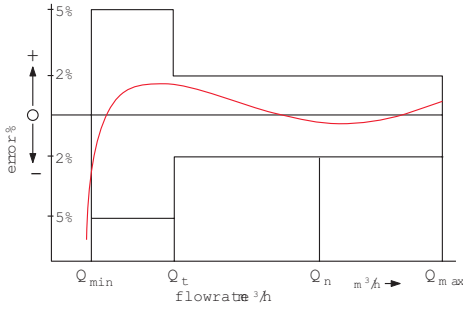
Nominal Diameter		DN	200	250	300
Size of meter (acc. to EEC)		Q _n	250	400	600
Q _{max}	Maximum peak flow (few minutes)	m ³ /h	800	1200	2000
Q _n	continuous flow ± 2%	m ³ /h	550	750	1000
Q _t	transitional flow ± 2%	m ³ /h	6.0	12	15
Q _{min}	minimum flow ± 5%	m ³ /h	4.0	6.0	12
	starting flow	m ³ /h	1.8	3.0	9.0

For DN 50-150 please see MeiStream PN 40

Performance Table 130 °C

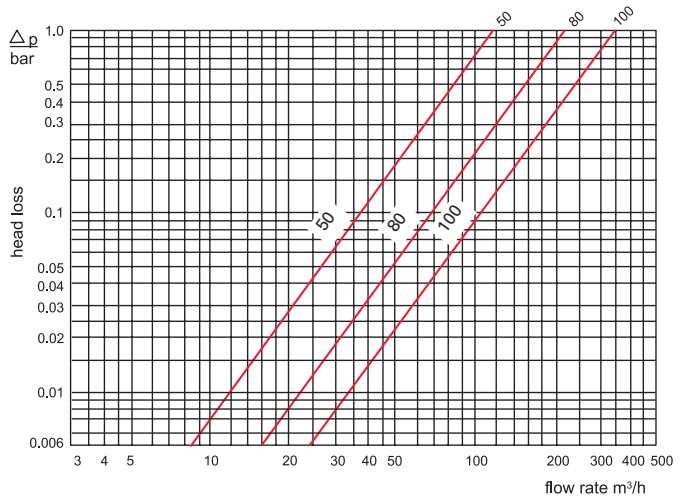
Nominal Diameter		DN	50	80	100	150	200	250	300
Size of meter (acc. to EEC)		Q _n	15	40	60	150	250	400	600
Q _{max}	Maximum peak flow (few minutes)	m ³ /h	30	90	140	300	500	1000	1200
Q _n	continuous flow ± 3%	m ³ /h	15	45	70	150	250	500	600
Q _t	transitional flow ± 3%	m ³ /h	1.8	3.2	4.8	12	20	45	50
Q _{min}	minimum flow ± 5%	m ³ /h	1.0	1.4	2.0	4.5	8	25	30
	starting flow	m ³ /h	0.25	0.35	0.6	1.7	2.0	10	15

Typical Accuracy Curve

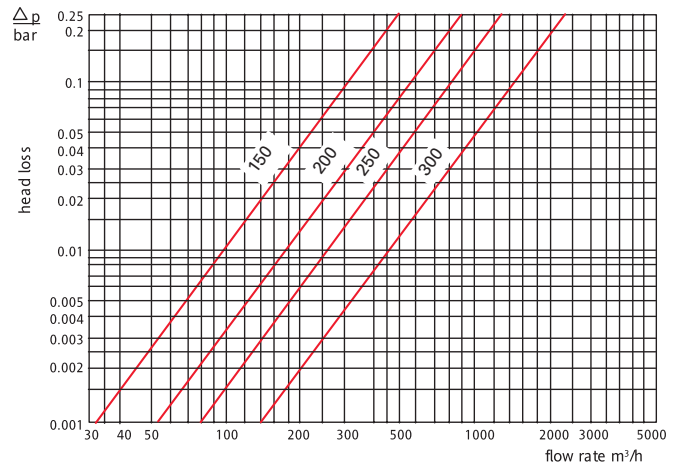


- Q_{max} = maximum peak flow
- Q_n = continuous flow
- Q_t = transitional flow $\pm 2\%$
- Q_{min} = minimum flow $\pm 5\%$

Typical Head Loss Curve

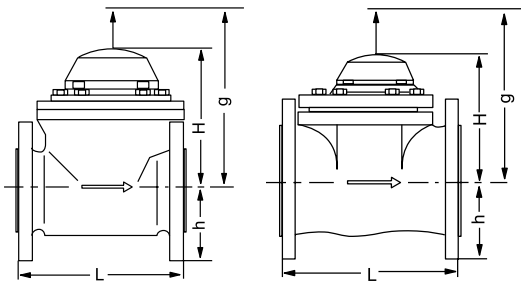


DN 50 ... 100



DN 150 ... 300

Dimension Pictures



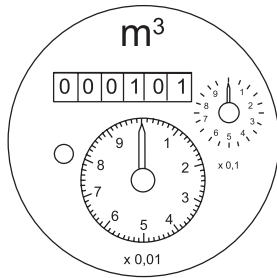
DN 50 ... DN 100

DN 150 ... DN 300

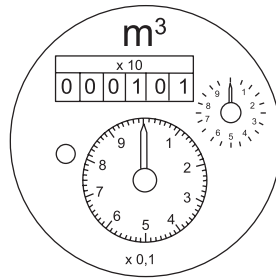
Dimensions and Weights

Nominal Diameter	DN	50	80	100	150	200	250	300
Size of meter (EEC)	Q_n	15	40	60	150	250	400	600
Working pressure PN	bar	40	40	40	40	40	25	25
Overall length	L	mm	200	225	250	300	350	450
Height	H	mm	175	175	175	233	233	321
	h	mm	82	100	110	135	162	194
	g	mm	360	360	360	470	470	680
Weight	meter	kg	15	18	24	43	57	118
	meas. unit	kg	3	3	3	9	9	22
	body	kg	12	15	21	34	48	96

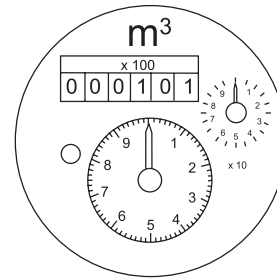
Dials



DN 50 ... DN 100



DN 150 ... DN 250



DN 300

Pulse Values

Nominal Diameter	DN		50 ... 100 1 pulse $\hat{=}$...	150 ... 250 1 pulse $\hat{=}$...	300 1 pulse $\hat{=}$...
Cold water meter	Standard	R 01		10 m ³ 1 m ³	100 m ³ 10 m ³
Hot water meter	Standard	R 02	0.25 m ³ 0.1 m ³	2.5 m ³ 1 m ³	25 m ³ 10 m ³
	with special register	R 02	0.25 m ³ 0.025 m ³	2.5 m ³ 0.25 m ³	25 m ³ 2.5 m ³
Cold water meter		OP 01 OP 03		0.01 m ³ 0.1 m ³	0.1 m ³ 1.0 m ³
Hot water meter		OP 02 OP 04	0.001 m ³ 0.01 m ³	0.01 m ³ 0.1 m ³	0.1 m ³ 1.0 m ³

Available Designs

COSMOS WP DN 200 ... DN 300 • 40 °C / PN 25/40

Diameter Nominal	DN	200	250 *)	300 *)
Overall length L	mm	350	450	500
Order no.		827468	828182	828188

For DN 50-150 please see MeiStream PN 40

* Only PN 25

COSMOS WP DN 50 ... DN 300 • 130 °C / PN 25/40

Diameter Nominal	DN	50	80	100	150	200	250 *)	300 *)
Overall length L	mm	200	225	250	300	350	450	500
Order no.		828364	827451	827457	827463	827469	828183	828189

* Only PN 25

Order Example

WP-QF 50 130 / 40 L= 200 mm _____ type
 according to EN 1092 PN 40 _____ diameter nominal
 82 83 64 _____ working temperature
 _____ working pressure
 _____ overall length
 _____ flange drillings
 _____ order no.



qualityaustria
Succeed with Quality

Certified according to ISO 9001
Quality Management System Quality Austria Reg.no. 3496/0

UK & Ireland Enquiries

Sensus UK Systems Ltd, International House, Southampton International Business Park,
George Curl Way, Southampton SO18 2RZ UK
T: +44 (0) 1794 526100 F: +44 (0) 1794 526101 Email: info.gb@sensus.com www.sensus.com

International Enquiries

Sensus GmbH Hannover, Meineckestraße 10, D-30880 Laatzen Germany
T: +49 (0) 5102 74-0 F: +49 (0) 5102 74-3341 Email: info.int@sensus.com www.sensus.com

