



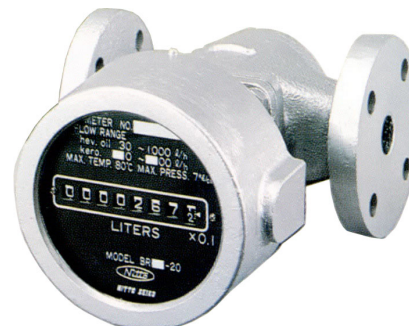
OIL METER

SPECIFICATIONS

SSV16151 15.01

1. Outline

OIL METER is, using measuring portion of the rotary piston type which is most simple construction among the positive displacement flow meter, primarily intended for use in fuel oil measuring applications. This meter is applied to a boiler fueling, measuring check and control of fuel oil and so on.



2. Feature

- Small and lightweight.
- Easy handling and maintenance due to simplification of inner mechanism.
- Small influence by viscosity variation.

3. Specification

Specification of measuring unit

Volume symbol	BR13-3	BR20-2	BR25-2
Measured liquid	Kerosene, light oil and A,B,C heavy oil		
Nominal size	15A	20A	25A
Liquid viscosity	2~500 mPa·s		
Liquid temperature	Normal~80 °C (Option for temperature 80~120 °C)		
Liquid pressure	1.0 MPa or less		
Measuring accuracy	Within ± 0.5 %		
Connection	JIS10K 15A	JIS10K 20A	JIS10K 25A
Material	Body: FC200, Rotor: AC3A		

Specification of counter unit

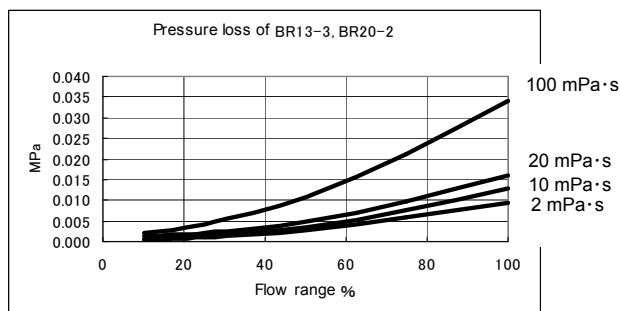
Volume symbol	BR13-3	BR20-2	BR25-2
Type of indication	Mechanical		
Display	Numerical figure roller counter		
	Display method	Non-resetable integrated flow rate: Numerical figure roller 8 digits 9,999,999.9L	
Output	Pulse output (Option)	Total	0.02 L
		Min. scale	1
		No. of output	Unit pulse
		Assignment of output	Contact signal
		Kind of signal	200VDC, 0.5 A, 10W
		Contact capacity	1 L/P
Power source	—		
Ambient temperature	5~60 °C		
Explosion-protection	Non-explosion proof		
Material	Aluminum die casting		

4. Flow range

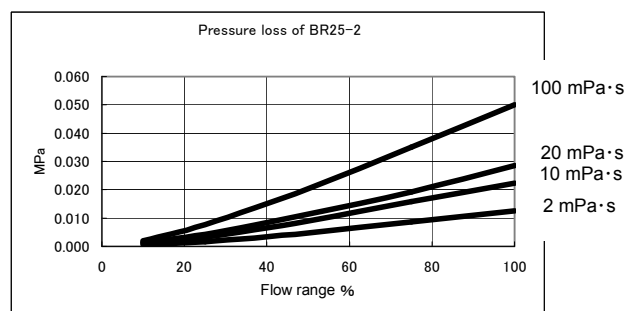
Volume symbol	1mPa·s~ Kerosene, light oil	10~500mPa·s Heavy oil
BR13-3	30~ 200 L/h	10~ 200 L/h
BR20-2	100~1000 L/h	30~1000 L/h
BR25-2	250~2500 L/h	150~2500 L/h

5. Pressure loss

4-1) BR13-3, BR20-2



4-2) BR25-2

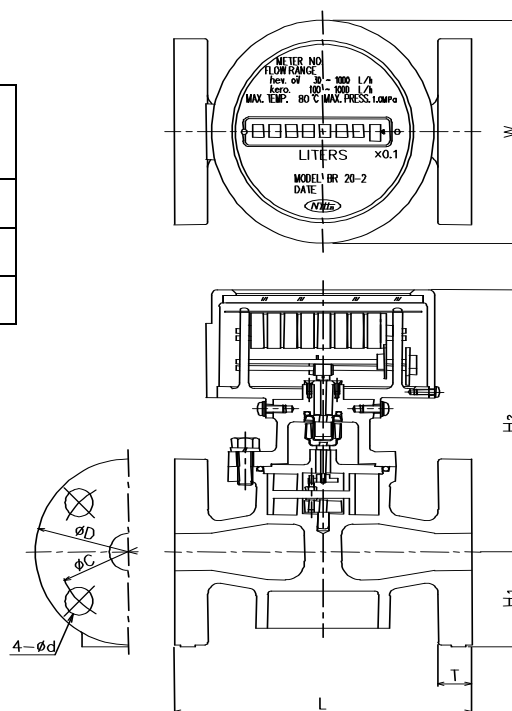


6. External dimensions (mm)

● Flow meter

Model	Nominal Size	Flange Standard	L	H ₁	H ₂	W	D	C	d	T
BR13-3	15A	JIS10K	140	48	148	120	95	70	15	16
BR20-2	20A	JIS10K	160	51	141	120	100	75	15	18
BR25-2	25A	JIS10K	220	64	164	120	125	90	19	18

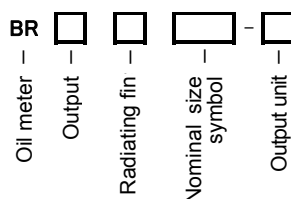
※Length H₂ will be 90mm longer when radiating fin is equipped



● Strainer

Please install a strainer (60 mesh) without fail just before the flow meter.

7. Product code



● : standard ○ : manufacturable

MODEL	Specification code		Specifications	BR13-3	BR20-2	BR25-2
BR			Oil meter	●	●	●
Output	C			Without	●	●
				Reed switch 1L/P	○	○
Radiating fin	F			Without (-10 ~ 80°C)	●	●
				Single fin (over 80°C but not higher than 120°C)	○	○
Nominal size symbol	13-3		Nominal size 13mm Max flow rate 200L/h	●		
	20-2		Nominal size 20mm Max flow rate 1,000L/h		●	
	25-2		Nominal size 25mm Max flow rate 2,500L/h			●
Output unit	R4		Indicate in case of Reed switch output	○	○	○

▼ The contents of description are subject to change without notice.



NITTO SEIKO CO., LTD.

30 Nogamihata, Nobu-Cho, Ayabe, Kyoto 623-0041, JAPAN
 TEL : +81-773-43-1412
 FAX : +81-773-43-1595
 E-mail:sales@nittoseiko.co.jp
 http://www.nittoseiko.co.jp/